



# 2024 Annual Impact Report

*A special edition of Wellspring*



## Deep Roots, A Strong Foundation for the Future—

Building on a Solid History of Leadership, Stability, Responsibility, Commitment and Statewide Impact



STONY BROOK-MILLSTONE  
WATERSHED  
ASSOCIATION



# Vision for the Future

## Our strategic plan:

Affirms our role as a center for learning and leadership on watershed health and water resources protection. We develop and disseminate solutions to advance watershed restoration, regional collaboration, and resilience to the impacts of climate change.

Envisions our Watershed Center and Reserve as exemplars of environmental stewardship, teaching platforms that advance our mission and an educational model of a carbon negative campus.

Renews our commitment to connecting people of all ages to the natural world and the joy of nature.

Commits us to work with our partners towards environmental justice, ensuring that all community members enjoy strong and effective environmental protections, access to green spaces that offer health benefits and build climate resiliency, and equal access to the decision-making processes for creating healthy environments in which to live, learn and work.

Maintains our intensive focus within the Stony Brook-Millstone and Central Delaware River Watersheds, while strengthening our work to improve statewide policy and practices.

### This year, The Watershed Institute proudly commemorates two significant milestones.

First, we celebrate our 75th Anniversary and the men and women whose leadership and unwavering commitment to New Jersey's water and environment have made our state a better place to live, work, and learn.

Second, as we celebrate our history of environmental accomplishment this year, we also embark on a fresh new strategic plan (see pg 2). Informed by input from our partners and constituents and crafted by our dedicated Board of Trustees and staff, the new plan will help us navigate contemporary challenges spawned by climate change, overdevelopment, and environmental injustice.

In this Annual Impact Report, we explore individuals and events that helped form the solid roots upon which we stand today. Through the decades, The Watershed Institute has remained steadfast in its mission to safeguard water resources through conservation of land, advocacy for environmental protection, watershed science and monitoring, and education of children, teens, and adults.

As we move forward, The Watershed Institute is grateful for the financial support of many individuals, foundations and other institutions that continue to make our efforts possible.



*Barbara Griffin Cole*

**Barbara Griffin Cole**  
Board Chair



*Jim Waltman*

**Jim Waltman**  
Executive Director

Leadership 4

Stability 6

Responsibility 8

Commitment 10

Statewide Impact 12

Donors 14

Financials 27

**1949**

Stony Brook-Millstone Watershed Association is founded by David H. McAlpin and Kathleen Peyton.

**1951**

Organization is formally incorporated and launches program to plant trees and cover crops to stem erosion of farmland soils and sedimentation of streams.

**1957**

We complete a Regional Planning Study for the Millstone Watershed.



**1969**

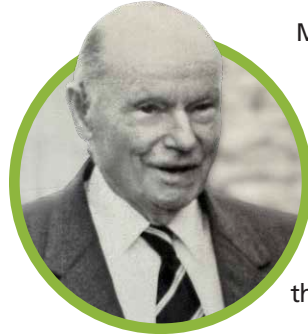
Muriel Buttinger donates 400 acres to create the Watershed Reserve.

**1975**

Watershed Nature Camp & Watershed Fest are initiated.

# Leadership

The Watershed Institute's environmental leadership began in 1949, when David Hunter McAlpin III and Kathleen Anderson Peyton organized meetings of landowners to discuss the erosion of farmland, the sedimentation of local streams, and actions to address these problems in the Princeton area.



McAlpin, an investment banker and philanthropist, was concerned about the world's diminishing natural resources. Peyton was a leader of the Garden Club of Princeton and a vocal advocate for including education about the natural world in public schools.



the organization to change its name to The Watershed Institute 67 years later.

The two leaders modelled the Stony Brook-Millstone Watershed Association after the Brandywine Valley Association. Their creation was the nation's second conservation organization focused on a region defined by the hydrology of a watershed.

The organization was formally incorporated in 1951 and its first Board was created with 18 men and two women serving as Trustees. Our leadership in supporting a watershed movement that extends beyond our immediate region led

Over the years, The Watershed Institute has played a key role in virtually every important water and land use issue in New Jersey, including regulation of wetlands, wastewater, and stormwater, protection of stream corridors and open space, siting of transportation and energy infrastructure, and sustainable agriculture.

As it continues to evolve and face new challenges, the organization remains grounded in its founding principles, ensuring a sustainable and vibrant future for the region and beyond. We are grateful for the many individuals and institutions whose financial support makes our work possible.



The Watershed Institute is the **Second oldest Watershed** organization in the country

## Jamie Sapoch

In the early 1990s, when The Watershed Institute faced financial uncertainty, Jamie Sapoch emerged as a transformative leader who helped put the organization on solid financial footing while launching one of its most enduring programs.

The StreamWatch volunteer water monitoring program that she created would grow to become a statewide model. Today, The Watershed Institute is a statewide leader in volunteer monitoring.

With Trustees Walter Gips and Betsy Peyton, Jamie also helped establish the Watershed Advisory Board—a group of former board members and other supporters who provide invaluable historical perspective and guidance. This ensures that every decision made today is informed by the rich tapestry of our organization's past.

Jamie's prowess at developing programs and raising funds, helped secure a bright future for the organization.

## Erin Stretz



Strong leadership continues today. Our Assistant Director of Science Erin Stretz administers the New Jersey Watershed Watch Network, a statewide network of volunteer water monitoring programs, under contract with the NJ Department of Environmental Protection that includes Salt Watch. Excessive use of salt on our roadways leads to elevated levels of salt in our streams, which can harm aquatic life and can pollute drinking water sources and damage infrastructure. By engaging communities in stream monitoring and raising awareness about the environmental consequences of excessive road salt usage, the Watershed seeks to improve road maintenance practices and ensure that New Jersey's roadways are not only safe but also environmentally sustainable.

## Strong Leadership through the Decades

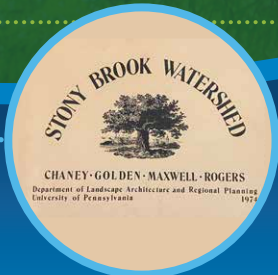
### Executive Directors

- James Lawrence (1953-1955)
- Malcolm Crooks (1955-1963)
- Richard Thorsell (1963-1970)
- Ian Walker (1970-1975)
- Adelle Mitchell (1975-1980)
- Jim Gaffney (1980-1985)
- Todd Bryan (1985-1989)
- Patricia Reed Begel (1989-1991)
- Jamie Kyte Sapoch (1991-1997)
- George Hawkins (1997-2004)
- Jim Waltman (2005-present)

### Chairs of the Board of Trustees

- |                                       |                                 |                                      |
|---------------------------------------|---------------------------------|--------------------------------------|
| Faussett, John D. (1951*)             | Starr, William P. Jr. (1980-81) | Davis, Swep (2003-07)                |
| Reed, Theodore P., Jr. (1952*)        | O'Neill, Thomas M. (1981-83)    | Ellis, John (2007-08)                |
| VanWegen, Paul M. (1953-60*)          | O'Neill, Peter (1983-85)        | Preston, Candace L. (2008-10)        |
| McAlpin, David H. (1960-65)           | Johnston, Robert C. (1985-88)   | Sciarra, Lorraine A. (2010-13)       |
| Yates, Carlyle E. (1965-1966)         | Harvey, Thomas B. (1988-91)     | Glovier, Sophie (2013-16)            |
| Flemer, William III (1966-68)         | Taft, Peter (1991-94)           | Hanson, Laura (2016-18)              |
| Southerland, Thomas C. Jr. (1968-71)  | Stiles, Edmund W. (1994-97)     | Sillars, Scott (2018-21)             |
| Kuser, John E. (1971-74)              | Holt, Rush D. (1997-98)         | Cole, Barbara Griffin (2021-present) |
| Olcott, Diana (1974-75)               | Otis, Kim Augustus (1998-2000)  |                                      |
| Reed, Ingrid (1975-78)                | Obus, Nelson (2000-03)          | *Referred to as "President"          |
| McAlpin, Rev. David H., Jr. (1978-80) |                                 |                                      |

"I've been blessed to work on many good projects and with many good people and I've raised over \$100 million for nonprofits, but I'm most proud of my part in creating the StreamWatch program." —Jamie Sapoch



**1979**  
Large sewage plant defeated in favor of decentralized, "3 plant" strategy for sewage treatment in Stony Brook Watershed.

**1982**  
I-95 route through Hopewell Valley and the Sourlands is formally cancelled.

**1984**  
We initiate the Watershed Organic Farm & NOFA-NJ.



**1987**  
NJ Freshwater Wetlands Protection Act adopted with leadership from the Watershed.

# Stability

**Dr. Muriel Gardiner Buttinger transformed The Watershed Institute in 1969 with her generous gift of 400 acres and half a dozen historic buildings.**

From its humble beginnings working first from our founders' dining room tables and then leasing space in the tiny Marshall's Corner Schoolhouse, Dr. Buttinger's gift provided the organization a magnificent home worthy of its ambitious mission.

From its earliest days, The Watershed Institute has been an advocate for preserving ecologically sensitive lands. In the 1980s, we helped create both the D&R Greenway Land Trust and the Northeast Organic Farming Association of New Jersey, which had their first offices on the third floor of Dr. Buttinger's former home. In the late 1990s, we administered the Natural Lands Network to help towns create their own open space preservation programs.

We humbly acknowledge the Watershed Reserve's rich history as part of the Lenne-Lenape homeland and we honor the Lenape people for their knowledge, culture, and leadership in land and water conservation. We are also grateful stewards

of the Hannah and Andrew Drake Farmstead, our 18th and 19th century farm buildings that were listed on New Jersey's Register of Historic Places in 2023.

Forty years ago, the organization had a keen focus on sustainable agriculture. In 1984, Executive Director Jim Gaffney created a Sustainable Agriculture Program and the Watershed Organic Farm. Meg Cadoux was hired to convert 15 acres of conventionally farmed land into organic vegetable fields and generous individuals and institutions provided funds for farm machinery, infrastructure improvements, and necessary supplies.

The farm achieved phenomenal success under Jim Kinsel, who leased more than sixty acres from the Watershed from 1990 to 2020 and managed the farm under a Community Supported Agriculture (CSA) model. Kinsel's Honey Brook Organic Farm was New Jersey's first certified organic CSA and at one time was considered the largest organic CSA in the nation.

The Watershed Reserve has steadily grown to encompass nearly 1,000 acres of forests, wetlands, meadows, and farmland. This land is preserved in perpetuity, underscoring the stability of the organization itself.

## Al Johnson

From managing the Watershed Organic Farm property during the 1980s, when organic farming was just beginning to gain traction, to his four decades of leadership at the Northeast Organic Farming Association-New Jersey, Al Johnson's dedication to organic farming is extraordinary.

As one of NOFA-NJ's founding leaders, Al played a crucial role in providing support to early organic farmers. At that time, composting, cover crops, and regenerative agriculture involved a lot of experimentation, as there was no established support system for these practices. The collaboration between the Watershed Organic Farm and NOFA-NJ offered a platform for sharing best practices and advice and also created a key support network for those venturing into the uncharted territory of organic farming.

"The continued existence of organic farming at the Watershed, despite financial challenges, speaks to the organization's commitment to sustainability, farmland preservation, and healthy food." —Al Johnson

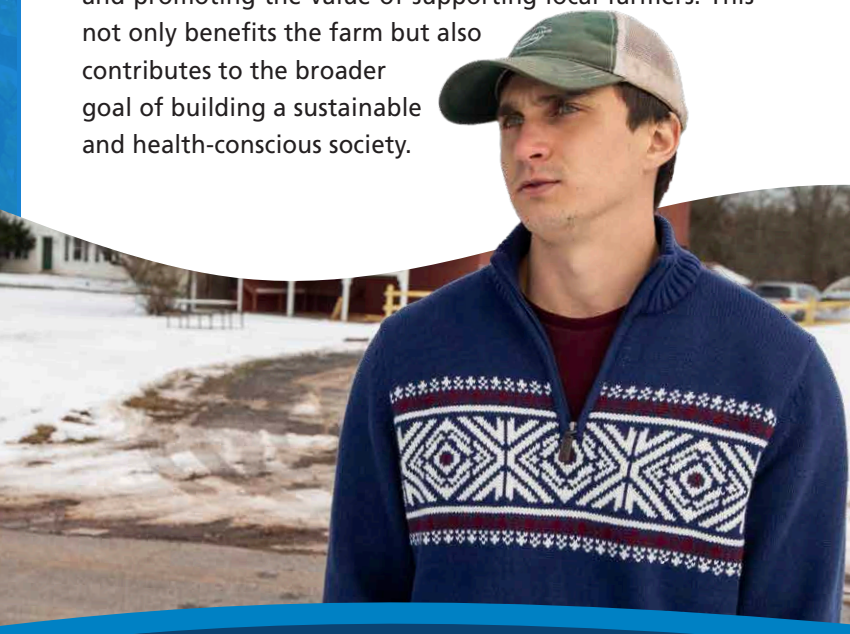
Only **30 percent** of the organic market now originates from domestic sources

## James Klett

The landscape facing organic farmers today is a lot different than it was when Al Johnson farmed the Watershed lands in the 1980s. Organic produce is widely accepted and available, and consumers understand its health benefits. New challenges have emerged, however.

James and Alex Klett began farming at the Watershed Reserve in 2023 and their Fairgrown Farm has been expanding rapidly. Because inexpensive organic produce from around the world is now ubiquitous in grocery stores, the Kletts are not just focused on producing organic food but also on educating consumers about the advantages of choosing locally sourced produce. They urge climate-conscious consumers to consider the carbon footprint of produce purchased from overseas.

By connecting people to their food in a more personal and immersive manner than a typical grocery store, Fairgrown Farm plays a crucial role in fostering a sense of community and promoting the value of supporting local farmers. This not only benefits the farm but also contributes to the broader goal of building a sustainable and health-conscious society.



**1987**

We launch the "Greenway Project" which later evolves into the D&R Greenway Land Trust.

**1989**

Buttinger Nature Center is opened to the public.

**1992**

StreamWatch water monitoring program created.

**1996**

Model municipal stream protection ordinance created.

**2000**

Kate Gorrie Butterfly House dedicated.

# Responsibility

**In an era in which environmental challenges loom large, The Watershed Institute plays a crucial role in steering a course towards sustainability and environmental responsibility.**

The Watershed Institute is committed to being a responsible steward, dedicating ourselves to not only preserve but also restore the ecological health of the land under our management. Whether it is through reforestation efforts, meadow and wetlands restoration, enhanced stormwater management, or community education programs to promote these practices with others, the Watershed is committed to ensuring that the land is not just protected but nurtured for future generations.

We are also committed to the fiscally responsible stewardship of the resources we are so fortunate to receive from our donors.

The urgent need to address climate change is a major theme of our new Strategic Plan and woven throughout our programs. Proud of the leadership we demonstrated when LEED-Platinum Watershed Center was constructed nearly a decade ago, the Watershed has adopted a bold new goal to make its campus and operations “carbon-negative” over the next decade. Actively pursuing strategies to address the carbon footprint of our operations will advance our goals for both environmental sustainability and fiscal responsibility as we reduce our expenditure on energy over the coming years.

## Life Returns to Wargo Pond

After months of dredging and reconstruction, birds and other wildlife are returning to Wargo Pond. The Wargo Pond restoration is now complete. Funding for the restoration came from a \$475,000 grant from the New Jersey Department of Environmental Protection’s Green Acres Stewardship Program and a generous bequest from Barbara Delafield, a former StreamWatch volunteer who passed away in 2020.

With structural repairs complete, the focus now shifts to restoring forest habitat around the pond. Conservation & Sustainability Director, Kory Dudash, plans to remove dead ash trees that pose a safety concern, improve trails, and plant

native trees and shrubs around the pond to support the area’s ecosystem. A plan for restocking fish and other aquatic species is being developed.

Wargo Pond has played a central role in The Watershed Institute’s education and recreation activities, serving as a vibrant wildlife habitat since the late 1960s. The pond once hosted a diverse range of ducks, herons, egrets, and other water birds, as well as turtles, fish, mussels, and other aquatic species. The restoration marks a positive step towards revitalizing this ecological and recreational asset.

## Bob Harris

As a key leader on The Watershed Institute’s design team, former Trustee Bob Harris was instrumental in ensuring that the Watershed Center for Environmental Advocacy Science and Education met the highest standards for environmental sustainability.

A nationally recognized expert on air, soil and groundwater contamination and remediation of these toxins, Bob was a founder and principal at Environ, a leading environmental consulting firm. Later he shifted his focus to sustainable design and engineering and served as a visiting lecturer at Princeton University’s Department of Civil and Environmental Engineering.

Featuring a green roof, rain gardens, stormwater wetland, solar photovoltaic panels, rainwater harvesting system, a constructed wetland wastewater treatment system, solar hot water, a geothermal heating and cooling system, and other green strategies, the Watershed Center achieved the highest rating—LEED-Platinum—from the U.S. Green Building Council through its Leadership in Energy and Environmental Design program.

Understanding that the LEED program awards points for buildings located in urban areas, near public transportation, Bob knew that the Watershed Center would have to secure the highest possible ratings in the program’s energy category to achieve LEED-Platinum. He enlisted his Princeton engineering students to contribute ideas to the design of the building.

Opened in 2015, the Watershed Center offers an educational experience to all visitors and demonstrates The Watershed Institute’s commitment to sustainability. Bob Harris’s expertise played a pivotal role in bringing this ambitious project to fruition, adding another chapter in The Watershed Institute’s history of leadership and environmental stewardship.



Since 2007, **more than 76 tons of trash** have been removed from NJ waterways by volunteers during Watershed stream cleanups

## Kory Dudash

The experience gained from constructing the Watershed Center will serve as valuable guidance for Conservation and Sustainability Director Kory Dudash as the organization embarks on renovations to the historic Andrew & Hannah Drake Farmstead at The Watershed Institute’s Reserve.

The farmstead holds significant historical value as both a highly intact and well-preserved example of a successful family farm from the 18th and 19th centuries and as the home of Dr. Muriel Gardiner Buttinger for forty-five years. The farmstead was added to the New Jersey Register of Historic Places in 2023 and The Watershed Institute has received a grant from the New Jersey Historic Trust to aid in stabilizing and repairing the farmstead’s large barn and wagon house.

The large barn, a striking example of traditional English barn architecture in New Jersey, is an architectural highlight of the farmstead and underscores the historical significance of the property. Kory Dudash, a landscape architect with experience designing, installing, and maintaining green stormwater infrastructure in the private, public, and nonprofit sectors, will leverage insights gained throughout her career to help navigate the complexities of integrating sustainable features into the farmstead while preserving its historical integrity.



**2002**

River-Friendly certification program launched.

**2004**

Proposed Millstone Bypass is defeated.

**2007**

Watershed stream cleanups initiated.

**2008**

NJDEP designates Stony Brook as Category-One in response to Watershed petition, increasing protection.

# Commitment

**For seven and a half decades, The Watershed Institute has had an unwavering commitment to fostering positive change, rooted in principles of environmental responsibility and community engagement.**

Recognizing the pivotal role education plays in shaping the future, our founders laid the groundwork for programs that would empower individuals to become stewards of the environment. The growth of STEM and natural history programming for schools and the public, summer camps, academies, and youth leadership initiatives emerged as a testament to this commitment, instilling a deep love for nature and environmental awareness in generations to come.

Our commitment to making the joy of nature accessible to all has been a driving force behind numerous outreach programs and events.

In the 1990s, we created a scholarship fund to enable children from families with financial needs to attend our summer camp. Some school districts also receive free programming from Watershed instructors and transportation to the Watershed Reserve.

Thanks to the generosity of our supporters, we've expanded this effort to break down barriers to education, expanding

opportunities and cultivating interest in environmental science, advocacy, and education. Our new strategic plan reaffirms and expands this commitment to foster a more knowledgeable and diverse environmental community.

As our journey unfolds, so does our commitment to justice, equity, diversity, and inclusion (JEDI). Recognizing the importance of inclusive environmental solutions, The Watershed Institute has been actively integrating JEDI principles into everything we do. This commitment ensures that our environmental initiatives amplify all voices regardless of background or identity.

The Watershed Institute's commitment extends beyond conservation to community building. Events like Stream Cleanups and Trenton River Days bring communities together and foster a shared responsibility for our environment. Our engagement at the local level is a testament to our belief that environmental initiatives are not just about protecting nature but also about creating strong, connected communities.

## Jeff Hoagland

Education Director Jeff Hoagland's 40-years of dedication to The Watershed Institute reflects a profound commitment that he describes as a calling. His journey began in rural New Jersey, where his childhood love for nature ignited a passion that has shaped his life's work. Throughout his extensive experience, Jeff has witnessed the transformative power of connecting children with the natural world, instilling in them a lasting love for nature and commitment to its protection.

An extraordinary naturalist, Jeff embraces a celebratory approach to nature, emphasizing the importance of experiential learning. His belief in the value of getting children out of the classroom and into direct contact with the natural world underscores the philosophy that true understanding comes from hands-on experiences. By fostering joy in nature, Jeff aims to inspire a lifelong connection and a sense of responsibility towards the environment.

Today thanks to generous individuals and organizations, we can now provide scholarships, transportation, and supplies to expand our outreach to more students.

"I have faith in our youth and their value for our future."

—Jeff Hoagland

**21 Teachers** are part of the StreamWatch Schools network.

**861 campers** participated in summer camp in 2023

## Davis Bush

When Davis Bush, StreamWatch Schools Coordinator, became an intern at The Watershed Institute in the spring of 2023, little did he anticipate the profound impact it would have on his life. On the Watershed's education team, Davis a resident of Millstone and a graduate of Stony Brook University, discovered a supportive and dedicated group of colleagues engaged in meaningful work.

After a year of immersion as an intern, Davis identified his true passion as an environmental educator just as The Watershed Institute launched its innovative education program – StreamWatch Schools. Recognizing Davis's dedication, he seamlessly assumed a central role within the program.

Davis has taken on leadership of the training program for teachers so they can implement the StreamWatch program in their classrooms. He offers a comprehensive and complimentary StreamWatch Schools professional development hybrid course, combining online instruction during the winter with hands-on streamside training in the spring. Post-training, participants become integral members of the growing StreamWatch Schools community.

Under Davis's guidance, the StreamWatch Schools program imparts valuable critical thinking skills to students and also forges a personal connection to their local watershed. Through this initiative, Davis and The Watershed Institute exemplify a commitment to elevating environmental education, fostering scientific inquiry, and instilling a sense of environmental responsibility in young people.



**2011**

70 acres are purchased from Bryce Thompson, consolidating two previously non-contiguous parts of the Watershed Reserve.

**2011**

NJ adopts restrictions on fertilizer use to protect water.

**2015**

LEED-Platinum Watershed Center opens.

**2017**

Weston Mill Dam removed from the Millstone River, helping restore American shad to the river.

**2018**

Organization changes name to The Watershed Institute, expands work in Delaware River Watershed.

# Statewide Impact

Over the decades, The Watershed Institute has been proud to play a central role in the growth and maturation of New Jersey's vibrant conservation and watershed protection community.

For example, Malcolm Crooks, our second executive director, provided guidance on the formation of several other watershed associations in New Jersey and Pennsylvania and today we provide leadership for the New Jersey Council of Watershed Associations, which coordinate on policy and scientific issues.

Since our founding in 1949, we have played a leading role in the adoption of state laws and regulations concerning the management of wastewater, stormwater, and source water, and the protection of drinking water, wetlands, stream buffers, and open space.

The Watershed Institute's policy director, Mike Pisauro, Esq. is one of the state's leading experts on water law and policy and has been a key leader and advocate for raising the bar for stormwater mitigation from land developments. Recent victories include the NJ Department of Environmental Protection's recent adoption of the groundbreaking Inland Flood Protection Rule, and new Municipal Separate Storm Sewer (MS4) Permits.

Strengthening protection for water and natural resources locally in the Stony Brook-Millstone and Central Delaware Watersheds, also benefits resources across the state of New Jersey.

## Lucia Middleton

Community Water Advocate Lucia Middleton recognizes that not everyone may actively consider environmental issues, such as climate change, in their day-to-day lives. However, Lucia, a resident of Hightstown and graduate of Colby College, understands the critical importance of making these issues relevant to everyone. Homes are flooding, lives are at stake, and businesses face destruction due to severe weather events. Lucia believes that everyone must be well-prepared and informed about the implications of climate change and the steps that people and governments can take to address them.

Lucia's approach is rooted in the understanding that environmental challenges affect communities personally. Lucia informs members of the community in both English and Spanish. One day, she may appear at a public hearing about flooding and the next day she may be teaching Spanish-speaking landscapers about the benefits of green infrastructure. In her advocacy, Lucia strives to engage a broad audience through her connections with NJ Rise and East Trenton Collaborative in the greater Trenton area.

Through her dedication and outreach efforts, Lucia has begun a dialogue between the Watershed and the community, helping to form more genuine connections.

887 residences have been certified River-friendly

8 golf courses, 22 businesses, 3 community partners, and 28 schools are certified River-friendly

580 people participated in our online webinars in 2023

300+ people attended the 7th Annual NJ Watershed Conference

More than 125 Continuing Education Units were awarded



## Ingrid Reed

In the 1970s, development in New Jersey was accelerating, environmental laws like the Clean Water Act were brand new, and there were very few women in the smoke-filled rooms where decisions were made. In this context, Ingrid Reed became involved in the environmental movement and joined the Watershed's Board of Trustees, which she would eventually chair. Her initial concern was excessive development in West Windsor and the potential environmental consequences of poorly planned wastewater systems that could lead to more uncontrolled sprawl and pollution.

Watershed Executive Director Ian Walker encouraged Ingrid to travel to Washington, D.C. for a training program about the new wastewater planning program created under Section 208 of the Clean Water Act that the Conservation

Foundation was sponsoring. She made the trip and gained a newfound passion for environmental advocacy and a deeper understanding of her role and responsibility.

Motivated by a sense of urgency, she encouraged her peers to take action. With Ingrid and fellow Trustee Grace Sinden assuming leadership roles, The Watershed Institute became deeply involved in wastewater infrastructure planning.

The results of their efforts are significant and can still be felt today. Instead of a large regional wastewater facility, smaller decentralized facilities were built and the need for a large trunk line was eliminated. This decision provided a check on development, and helped preserve much of the farmland that still exists today in our region.

Ingrid had an accomplished career in policy and academia after serving on the Watershed's Board, serving in leadership positions at Princeton University and Rockefeller University, directing the New Jersey Project at Rutgers' Eagleton Institute of Politics from 1996 until 2010, and serving on boards and commissions under several New Jersey Governors. She emphasizes the crucial role that nonprofits play in influencing government policies and credits The Watershed Institute for providing opportunities for women like herself to actively participate and lead. Her story reflects the power of individual voices and grassroots movements in shaping environmental policies and fostering positive change.



2020

Community Watershed Advocacy Program initiated.

2021

PennEast Pipeline proposal is withdrawn.

2022

StreamWatch Schools program launched.

2023

Inland Flood Protection Rule & amendments to MS4 program adopted to strengthen stormwater management.

2023

Watershed adopts new Strategic Plan.

# 2023 Donors

We gratefully acknowledge all the donors and partners who support our mission. Without you our work protecting clean water would not be possible. The lists below represent donations received between January 1, 2023 and December 31, 2023. We appreciate all our supporters, and donations of any size are crucial to our success. A complete list of donors can be found on our website.

A special thank you to our loyal donors who have provided long-time support to The Watershed Institute.

- Donors 25 plus years
- Donors 20 plus years
- Donors 15 plus years
- Donors 10 plus years

## Individual Donors

### Clean Water Champion | \$25,000+

- Anonymous
- Anonymous
- Estate of Evelyne A. Axelrod
- The Canaday Family Charitable Trust
- Helen Cannon and The Helen R. Cannon Charitable Fund of the Glenmede Donor-Advised Fund program
- Barbie & Chris Cole and The Griffin-Cole Fund
- Meg & Tom Gorrie and the Gorrie Family Foundation of the National Philanthropic Trust
- Laura & Alex Hanson and the Hanson Family Charitable Fund at Fidelity Charitable
- The McAlpin Fund of the Princeton Area Community Foundation
- Margaret Sieck & Bob Baldwin and The Baldwin-Sieck Family Fund of the Princeton Area Community Foundation
- Winifred Spar

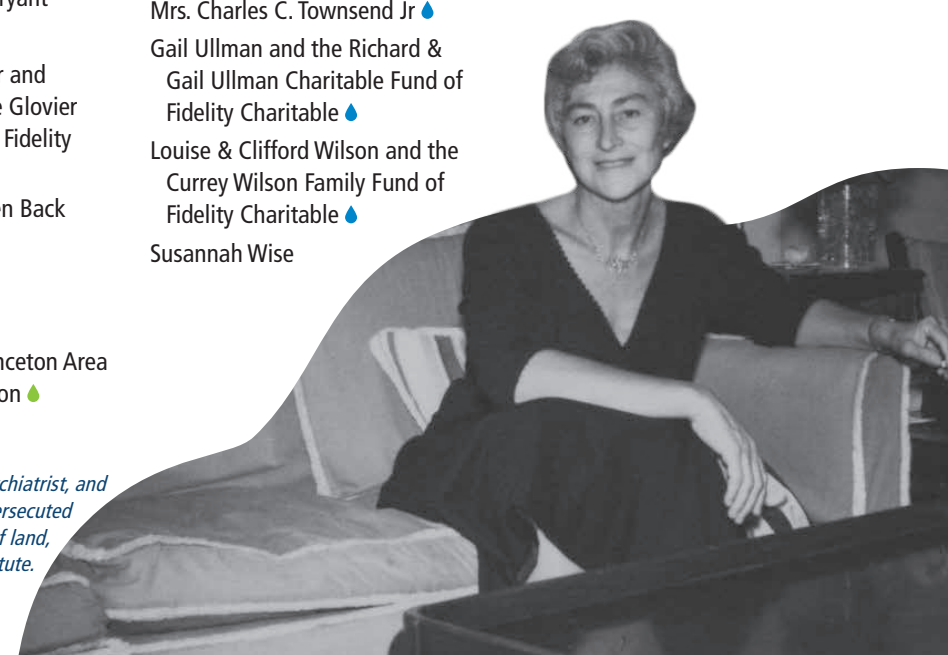
### River Advocate | \$10,000 - \$24,999

- Anonymous
- Anonymous
- Ashley & George Aitken-Davies
- Eve Coulson & Nelson Obus
- Dawn & Matthew Drago
- Stephanie & Bob Harris and the Harris Family Fund of the Princeton Area Community Foundation
- Hella & Scott McVay and The Hella and Scott McVay Fund of the Princeton Area Community Foundation
- Alicia & Kevin Merse and the Kevin and Alicia Merse Charitable Gift Fund of Fidelity Charitable
- Jacqueline & Thomas Rooke and The Charles Foundation
- Shefali Shah & Chris Boerner
- Ed Sproles and The E Sproles Charitable Giving Fund at Vanguard Charitable
- Estate of Susan B. Travers
- Maria & Eric Wimmers and The Wimmers Foundation of Morgan Stanley Gift

### Stream Saver | \$5,000 - \$9,999

- Anonymous
- Katherine Adams & Forwood Wisner III and the Ramsay Leatherman Cloud Fund of Schwab Charitable
- Barbara Baumecker
- India Blake Johnson and The India Blake Foundation, Inc.
- Susan & Marc Brahaney and the Brahaney Family Fund of Schwab Charitable and the Robichaud Fund of the Princeton Area Community Foundation
- Barbara & Edward Bromley
- Mary & Gerard Brophy and the Brophy Family Fund within the Raymond James Charitable Endowment Fund
- Veronica & Jonathan Bryant
- Alix Gerry
- Sophie & Curtis Glovier and the Curtis and Sophie Glovier Family Foundation of Fidelity Charitable
- Wendy Golden & Steven Back
- Kimberly Hansen
- Carol Hanson
- Glenn & John Helmers
- Kestrel Fund of the Princeton Area Community Foundation
- Karolin & Rene Obregon
- James Petrucci and the Petrucci Family Foundation
- Betsy & Tod Peyton
- Mrs. Charles C. Townsend Jr
- Gail Ullman and the Richard & Gail Ullman Charitable Fund of Fidelity Charitable
- Louise & Clifford Wilson and the Currey Wilson Family Fund of Fidelity Charitable
- Susannah Wise

*Dr. Muriel Gardiner Buttinger was a renowned humanitarian, psychiatrist, and philanthropist whose heroism helped countless Jews and other persecuted people escape the Nazis in late 1930s Europe. Her donation of land, buildings, and funds transformed The Watershed Institute.*



### Lake Leader | \$2,500 - \$4,999

- Anonymous
- Lisi Bromley and the Dougin Family Foundation Inc.
- Colleen & James Cosgrove and the Cosgrove donor-advised fund of Schwab Charitable
- Tracy & Dan Dart and the Daniel and Tracy Dart Charitable Gift Fund of Schwab Charitable
- Estate of Barbara R. Delafield
- Margaret Griffin & Scott Sillars and the Margaret Griffin and Scott Sillars Fund of the Princeton Area Community Foundation
- Carolyn & John Healey and The Ryan Family Foundation
- Cynthia Hillas and the Robert and Cynthia Hillas Charitable Gift Fund at Fidelity Charitable
- Amanda Maher & Amar Gautam
- Dionne & Alan Polk
- Candace & Marvin Preston
- Angela & Mike Rodgers
- Ann & Bob Russell
- Carolyn & George Sanderson and the Sanderson Family Fund of Morgan Stanley
- Lorraine Sciarra
- Inez & Dick Scribner
- Patricia Shanley & Christopher Barr
- Jessica Sumski & Chris Weber
- Jean & Kevin Ulkloss and the Ulkloss Family Charitable Fund of Fidelity Charitable
- Janet & Daniel Van Abs
- Sally Wells
- Philip Wey

### Pond Protector | \$1,000 - \$2,499

- Anonymous
- Anonymous
- Sandra & Paul Allen and The Allen Family Charitable Fund of Vanguard Charitable
- Laurie & Paul Babicki
- Mary & Jon Baum
- Jeremy Beer
- Karin & Rodney Belgrave
- Laura & Robert Berness
- Kathleen & Jay Biggins
- Mary Blair
- Jane & Ted Boyer
- Susan & J. Douglas Breen
- Jillison & James Brophy
- Franta Broulik
- Eileen Bruns & Christine Newman
- Hui Cao & John Weihe
- Etsuko & Dan Chamby
- Victory & Ted Chase Jr
- Lori & Neil Citrone
- Elliot Cohen
- Dalen Cole
- Samantha & Frank Condon
- David Crisanti
- Liz Cutler & Tom Kreutz and a donor-advised fund of Schwab Charitable
- William deCamp Jr and the William deCamp Jr Fund of the Community Foundation of New Jersey
- Jon Erickson
- Eugenia Erij & Andrew Brodey and the Andrew Brodey and Eugenia Erij Charitable Gift Fund of Fidelity Charitable
- Wendy Pierce Evans & Larry Evans and the Larry A. Evans Fund of Fidelity Charitable
- Rachel & Chauncey Farrington
- Eve & Herbert Foster
- Shauna & Chris Gerry
- Susanne Hand & David Kinsey
- Janet Haring
- Archer & Tom Harvey
- Natalie & George Hawkins
- Betsy Hoover
- Vilma Keri & Ed Matthews
- Donnetta Johnson & Yuri Marder
- Jamie Kamph and the J. Kleinberg Gift Fund of Schwab Charitable
- Casey & Sam Lambert and The Losam Fund
- Karen Linder & Michael Brill
- Cathy & David Loevner and The David and Catherine Loevner Family Fund of Vanguard Charitable
- Annarie Lyles & Andrew Dobson
- John McGahren

*Betty Wold Johnson was a long-time supporter of The Watershed Institute and a member of the organization's Advisory Board for more than two decades. Her generous bequest to the organization created the Betty Wold Johnson Endowment Fund to provide for the long-term financial support of The Watershed Institute and its essential mission.*





Ayanna McKay & Jerome Swindell  
 Meredith Moore & Steve Rabbe  
 and The Princeton Area  
 Community Foundation  
 Gina & Sumit Mukherjee  
 Barbara Nelson & Steve Rush  
 Michael Newhouse  
 Joyce Carol Oates and The Joyce  
 Carol Oates Foundation  
 Laura Ochalski  
 Karen O'Connell & Patrick  
 McDonnell and the Patrick  
 McDonnell and Karen O'Connell  
 Fund of Fidelity Charitable  
 Maryann and Sara Polefka and The  
 Polefka-Brigida Charitable Fund  
 of Vanguard Charitable

Alex & Howard Powers and the  
 Powers Family Charitable Fund  
 of Morgan Stanley Gift  
 Glorianne & Anthony Robbi  
 Elizabeth Romanaux and the  
 Margen Penick Charitable Trust  
 Nancy Ross & Bill Carmean  
 and the Carmean Ross Family  
 Charitable Fund of Fidelity  
 Charitable  
 Amanda & Fernando Salinas  
 Molly & David Schneider and  
 The Molly and David Schneider  
 Family Fund of Vanguard  
 Charitable  
 Mimi Schwartz & Robert Socolow  
 and the Robert Socolow Fund of  
 Jewish Communal Fund  
 Markell Shriver

Catherine & Andrew Sidamon-  
 Erstoff and the Catherine  
 and Andrew Sidamon-Eristoff  
 Family Fund of The New York  
 Community Trust  
 Grace & Frank Sinden  
 Kathy Taylor & Mark Boulding  
 Penny & Ted Thomas and The  
 Penny and Ted Thomas Fund of  
 the Princeton Area Community  
 Foundation  
 Robert Tomaselli & Michael  
 Dawson  
 Kathleen & Peter Tovar  
 Anne & Adrian Trevisan  
 Paula & Thomas Turicchi  
 Nancy & James Utaski and  
 Samantha, Mark & Emma  
 Bean and the Mr. & Mrs. James  
 Utaski Fund of the National  
 Philanthropic Trust

Woodney & John Wachter  
 Happy & Jack Wallace and the  
 John D. Wallace, Jr Memorial  
 Fund of the Princeton Area  
 Community Foundation  
 Alicia & Jim Waltman  
 Louise & John Wellemeier  
 Myra & Van Williams  
 Bonnie & Peter Wilson and a  
 donor advised fund of Morgan  
 Stanley Gift  
 Barbara Wolfe and the Bob  
 and Barbara Wolfe Charitable  
 Fund of the Princeton Area  
 Community Foundation  
 Elizabeth & William Wolfe  
 Nicole & Ryan Ziegler

## Friend | \$250 - \$499

Anonymous  
 Anonymous  
 Blair & Bill Ayers  
 Katie & Brian Bailey  
 Barbara & Sheldon Berkman  
 Barbara Berko & Joel Deitz  
 Laura & Leonard Berlik  
 Toni Besselaar  
 Teri Boyd & Aleksandar Hemon  
 Juanell & David Boyd  
 Lindsay & Michael Bracken  
 Sarah & Cliff Brangwynne  
 Susan & David Broeker  
 David Burwell  
 Louise Campi  
 Lisa Canzano & Greg Vafis  
 Deirdre & David Carroll  
 Lora Chio & Sean Cooney  
 Melissa & Philip Clippinger  
 Liz & David Cohen  
 Anita Davidson  
 Loretta & Steven DeRochi  
 Constance & Douglas Dixon  
 Liz Duffy & John Gutman  
 Alma & Mark Eisenacher  
 Beverly & Jeffrey Entin  
 Gary & Lisa Erwin  
 Emily & John Etchberger  
 Gwen Farley  
 Jill Feldman & Robert Lerner  
 Andrea & Mark Fereshteh  
 Isabel Fernandez & Eduardo  
 Bhatia  
 Dara Finehout & Matthew Keating  
 Joanna & Clem Fiori  
 Barbara Fishman &  
 Thomas Van Essen  
 Katherine Fullerton &  
 Eric Armour  
 Kathy Gaffney  
 Audrey Gates  
 Margie & Peter Gibson  
 Tania Gindilis  
 Jean Gray  
 Mrs. James Q. Griffin and The  
 James Q. Griffin Memorial  
 Fund of the Princeton Area  
 Community Foundation  
 Amy Hansen & Mark Canright  
 Rona & Andrew Harris

Lois Harrod  
 Nell & Dan Haughton  
 Brandi & Noel Hebert  
 Carl Hemmingsen  
 Susan Hockaday &  
 Maitland Jones Jr  
 Anne & Dylan Hogarty  
 Michael Hornsby  
 Lisa & Marc Huguenin and  
 Harrison's Smile Fund of the  
 Princeton Area Community  
 Foundation  
 Fran & Will Irwin  
 Adria & Stanley Katz  
 Leslie & Kevin Kuchinski and  
 Kuchinski Family Giving Fund of  
 Fidelity Charitable  
 Margaret Lamb & Matthew Grossi  
 Nicole & Bryan Langdo  
 Liz & Leighton Laughlin III  
 Teri & Joseph Lawver  
 Donna & Keith LePrevost  
 Marlane Lockheed &  
 Steven Frakt  
 Anne & Sabry Mackoul  
 Sharyn & Charles Magee  
 Wendy Mager & Eric Monberg  
 Cecilia & Michael Mathews  
 Jane McCarty & Michael Bell  
 Leah & Brian McDonald  
 Nancy & John Merritt III  
 Denise & Andrew Milot  
 Nikema & Damon Missouri  
 Sharon Mizels & Gordon Alter  
 Eve Niedergang & Andy Weiss  
 Elaine Nigam  
 Diana Noya & John Bowen  
 Michelle & Mark Nurse  
 Christine O'Brien & Paul Anzano  
 Andrea Odezynska & Peter Ihnat  
 Beth Ogilvie-Freda &  
 Mark Freda  
 Loraine & Kim Otis  
 Amy Pearlmutter &  
 James Andrews  
 Elizabeth & Joseph Pepe  
 Meghan & JD Peters  
 Chris Pierson & Kareen Bar-Akiva

Cristin Pineiro  
 Elizabeth Plautz  
 Krystyna Raporte  
 Dawn Reitz & Edward  
 Bromley III  
 Karen & Charles Repka  
 Dan Robison & Steve Miller  
 Elizabeth Roedell  
 Alfred Rogers  
 Carolyn Rouse  
 Cynthia Sage  
 Chris Santarpio & Eric Hagin  
 Jamie Kyte Sapoch &  
 John Sapoch  
 Sarah Saul  
 Catherine Schaefer &  
 Eric Batterman  
 Mary Schmidt & Elizabeth  
 Thompson  
 Kristina & Kurt Schulte  
 Sondra Scott & Marco Sacchi  
 Diane & Tom Seessel  
 Scott & Carin Sharp  
 Jean & Brett Shaver  
 Carly & Seth Siditsky  
 Judy Singleton  
 Jen & Bill Staikos  
 Nina & Ed Stelmakh  
 Carl & Nadine Stern and  
 the Stern Family Fund of  
 Fidelity Charitable

George Stickel  
 Kelly Sullivan  
 Katie & Christopher Sullivan  
 Mara & Pete Taft  
 Katherine Taub VanLaningham &  
 Erik VanLaningham  
 Jeffrey Tener  
 Lauren & David Thoma  
 Deborah Toth & David Krauss  
 Karin Trainer & William Stowe  
 Margret Van Vuuren & Scott  
 Chasalow  
 Susan & Jeffrey Vanderkam  
 Emily Vickers & Tom Mason  
 Tirza Wahrman Mitlak & Warren  
 Mitlak  
 Lindsey & John Walsh  
 Katrina & Matt Walsh  
 Jeremy Wang-Iverson  
 Jennifer & Frederick Wasserman  
 Joan Weidner and the Weidner  
 Gift Fund of Fidelity Charitable  
 Beth & Christian White  
 Catherine Williams & Bryan  
 Grenfell  
 Henry Wittman & Sawdust  
 Construction LLC  
 Alicia & Lambros Xethalis  
 Penny Xia  
 Andrew & Barbara Zwicker

## Creek Captain | \$500 - \$999

Carolyn & James Barnshaw  
 Danielle Bentsen & Shawn Sieler  
 Cindy & Frits Besselaar  
 Merrill Biancosino  
 Doranne & Frederick Bigelow  
 Jane Borns & William Hurlin  
 Kathleen Borthwick  
 Jeanne Brooks-Gunn  
 Elizabeth & Peter Brown  
 Katharine Van R. Brush  
 Jennifer Bryson  
 Claire & Ryan Bubb and the  
 Bubb Family Fund of Fidelity  
 Charitable  
 Anne & Richard Catena  
 Harriet Clark  
 Olive & David Coghlan and  
 The David and Olive Coghlan  
 Charitable Giving Fund of the  
 Ayco Charitable Foundation  
 Francesca Corrias & Davide Piras  
 Hope & Kevin Cotter  
 David Crane  
 Dan & Betsy Crofts and the  
 Crofts Family Fund of Fidelity  
 Charitable  
 Silvia & Pablo Debenedetti  
 Sari & Ralph DeCesare  
 Jenn & Ralph DeSimone  
 Kathy Easton & Roger Suttmeier  
 Landy & Peter Eaton

Peggy & Tom Eicher  
 Suzanne Elliott & Steven Pieri  
 Robbie & Shawn Ellsworth and  
 the Martha L. A. Norris Fund of  
 the Princeton Area Community  
 Foundation  
 Kathleen & Michael Farewell  
 Ann & Lee Farnham  
 Paula Figueroa-Vega & Reuben  
 Vega  
 Tanice & Dudley Fitzpatrick  
 Janice & Ronald Flaugher  
 Galina Flider & Sergey Kriloff  
 Cari & Lee Gallman  
 Anne & Bill Gates  
 Christi & Rahul Gautam  
 Sarah & Richard Gregg  
 Rebecca & John Griffith  
 Kathy & Bill Hackett  
 Monica Hamilton & Chris Arne  
 Barbara & William Happer and  
 the Happer Family Fund of  
 Renaissance Charitable  
 Robert Hendrickson and a donor  
 advised fund of Charitable Flex  
 Fund  
 Tracy Hewitt and the Roche Family  
 Charitable Foundation of Fidelity  
 Charitable  
 Anna Horner  
 Jacqueline & Kenneth Johnson  
 Sarah & Landon Jones  
 Devra Keenan

Jenny Kershner & Steve Finkelstein  
 Michael Kincaid and a donor  
 advised fund of Morgan  
 Stanley Gift  
 Helene & Russell Kulsrud  
 Kim Lavin & Gregory Choi  
 Andrea Lehman & Andy Rowan  
 Candice & Adam Lenkowsky  
 Adrienne & Jason Longo  
 Jenny & Phil Ludmer  
 Diana & Jorge Luque  
 Sarah McCue Callaghan & Shaun  
 Callaghan  
 Katherine & David Miller  
 Liza & Schuyler Morehouse  
 Shari-Beth Nadell  
 Iris & Martin Neuhaus  
 Beth & Ray Nichols  
 Richard & Sharon Onderko  
 Tari Pantaleo  
 Carol & Edward Pfeiffer  
 Bernadette & Matt Placky  
 Judith Pollack & James Ohls  
 Janet Cochoff Pressel & Michael  
 Pressel  
 Jani Rachelson & David LaMotte  
 and the Rachelson-LaMotte  
 Fund of Schwab Charitable  
 Ingrid Reed  
 Randy Rutberg & Enrique  
 Curchitser  
 Elizabeth & Greg Samios

Marcia & John Shackelford and  
 the Shackelford Family Fund of  
 the Princeton Area Community  
 Foundation  
 Ann & Austin Starkey  
 Margaret & Drew Stoneman  
 Kristen & Timothy Stout  
 Thomas Stuart  
 Carrie & Paul Teti  
 Marilee Thompson &  
 James Bialek  
 Adrienne Tymiak & David  
 Ackerman and the David  
 Ackerman & Adrienne Tymiak  
 Charitable Fund of Fidelity  
 Charitable  
 Elizabeth Walsh  
 Suki & Matthew Wasserman and  
 the Suki & Matthew Wasserman  
 Fund of Jewish Community  
 Foundation of Greater Mercer  
 Bay & Fred Weber and The Weber  
 Family Charitable Fund at  
 Vanguard Charitable  
 Joan & Ralph Widner  
 David Wilcove  
 Heidi Wilenius &  
 Scot Pannepacker  
 Beate Witzler & Mike Peachin  
 Theresa & Jay Wrobel and the  
 Wrobel Family Gifting Fund of  
 Bank of America Charitable  
 Joan Yoon  
 Dan Zenowich



Meg and Tom Gorrie have been supporters and leaders of The Watershed Institute for more than three decades. Meg is Trustee Emeritus.

## Sponsor | \$100 - \$249

Alexander Ackley  
 Karleen Aghevli & Jeffrey Olkin  
 Pia & Luis Ahn  
 Shirley & Jonathan Allen  
 Vicky & Dave Allen  
 Carole Allison  
 Christine & Al Altomari  
 Geneva & Ernest Anastasio  
 Susan Anderson & Ben Cittadino  
 Barbara Andrew & Gerald Seid  
 Sandy & Dean Anglin  
 Mary Jane Augustine  
 Jaya Balasubramaniam & Franjo Ivancic  
 Nancy & Kyle Barich  
 Kirk Barrett  
 James Bash and Martens Bash Foundation of Fidelity Charitable  
 Gisele & Michael Batista  
 Victor Bearg

Pamela & Robert Becker and a donor-advised fund of Fidelity Charitable  
 Ann & Roger Behar  
 Beth Behrend & Robert Eaton  
 Maria Benito-Herrero & Stephen Griffies  
 Roberta Bennett  
 Daniel Benson  
 Anita Bhala & Rajiv Dave  
 Archana Bhorkar  
 Jennifer & Peter Bickham  
 Alexandra Bird  
 Martha & Scott Blandford and the Blandford Charitable Foundation of Fidelity Charitable  
 Carol Blum & Matthew Feuer  
 Mary Anne Borge & Jeff Worthington  
 Amanda & Nicholas Botwood  
 Carolyn & Frederic Brehm  
 Susie & Sean Brennan  
 Susan & Henry Bristol

Barbara Brizzee & John Hunt and the BBJHdaf2020 fund of Fidelity Charitable  
 David Brook  
 Theresa & Richard Brooke  
 Elaine Brooks  
 Erica Bullinger  
 William Burks  
 Christine Burns  
 Jo & James Butler  
 Megan Buzzetta  
 Aoife Cahill & Barry O'Neill  
 Kai-Fang & Robert Caivano  
 Kristen & Kevin Cammarata  
 Dana Campbell  
 Todd Campbell-Crow  
 Meg & Woodrow Carsky-Wilson and The Carsky-Wilson Family Fund of Renaissance Charitable Giving Foundation Inc.  
 Cindy & Rich Cavallaro  
 Julie & Matthew Cesari  
 Kristina Clark & John Kemmerer

Roxane & Jamie Clarke  
 Louisa & Austin Clayton  
 Melinda & Jeffrey Coen  
 Dawn Cohen & Kumar Vadaparty  
 Rebecca Colbeck & Matthew Crossley Colbeck  
 Susan & David Colby  
 Susan Colket  
 Kay & Toyce Collins  
 Lynne Cullinane  
 Fara Dabhoiwala & Jo Dunkley  
 Patricia Deering & Skip Jonas  
 Robert Dember  
 Sharon & Peter Demers  
 Jessica & Edward Deutsch  
 Debra Dillon  
 Joanne & William Dix  
 Jennifer & Jack Donners  
 Heather & Sean Driscoll  
 Ilene Dube & Mark Schlawin and the Schlawin/Dube Charitable Fund of Fidelity Charitable

Anne Duncan  
 Katherine & Joshua Dunn  
 Ruth Ehinger & Richard Alexander  
 Ruth Ekstrom  
 Karen & John Ellis  
 Erica Etchason  
 Jamie & Keelan Evanini  
 Leslie Fabello & Rob Sloan  
 Robert Farrauto  
 Kathy Fedorko & Peter Macholdt  
 Heather & Ryan Fischer  
 Joan & John Fleming  
 Linda Flower & Gary Johnston  
 Leona & George Fluck  
 Robin Fogel & Morris Cohen  
 Julie Fox & Albert Gates and the Greenview Ecology Fund of Fidelity Charitable  
 Phyllis Frakt & Alan Hershey  
 Judith & Claude Frazer  
 Carmela & Bob Freda  
 Irv Freilich  
 Martha Friedman & Harold Heft  
 James Fuger  
 Scott Fulmer  
 Lydia & Russell Furnari  
 Karin & Rob Geohan  
 Kathryn Gessner  
 Amanda & William Gillum  
 Peter Godfrey  
 Noel Goeke  
 Margaret & Robert Goertz  
 David Goldfarb and the David A. Goldfarb Charitable Fund of Fidelity Charitable  
 Jill Goldman  
 Carole & Joel Goldstein  
 Laurel & Steven Goodell  
 Amanda & Rob Gorrie  
 Tamsen Granger & Daniel Abuhoff  
 Barbara Greenstein  
 Emily Gromoll  
 Sheila Baker Gujral  
 Wanda & Robert Gunning  
 Helen Hamilton  
 Christopher Heitzman

Margaret & Dennis Helms  
 Gayle Henkin & Thomas Smith  
 Tristen Herrstrom & Scott Carpenter  
 Anna & Derek Holmes  
 Jessica & Robert Horton  
 Jane & Ray Hostetter  
 Junko Huang & Patrick Chow  
 Susan & Robert Huber  
 Mary Ingraham  
 Kimberly & Dean Jablonski  
 Carol & John Jackson  
 Allison & William Jackson  
 Michelle & Ken Jacob  
 Angela & Stanley Jacobs  
 Cindy & Markian Jaworsky  
 Myrna & Edward Jenkins  
 Sue & Michael Jennings  
 Jacqueline & Cam Johnson  
 Sandra Jones & Stephen Eaton  
 Lauren Jung  
 Lorna & Richard Kaluzny  
 Joe Kazimierczyk  
 BJ & Mark Kennedy  
 Regina & Jaap Ketting and the Ketting Family Fund of Fidelity Charitable  
 Catherine Kevett & James O'Connor  
 Maureen & David Kimball  
 Flora & Christoph Kimmich  
 Linda & Paul Kiss  
 Anne Kreitzberg  
 Ward Kuser  
 Robin & John Lacorazza  
 Susan & John Landau  
 Gretel LaVieri & Mike Winton  
 Yolanda Lawas & Jeffrey Osborn  
 Rene & Robert Lawless  
 Shawn & David Lawn  
 Donna Astor-Lazarus & Clifford Lazarus  
 Elvera Leader  
 Laura & Jensen Lee  
 Ginger & Clark Lennon  
 Jill Lenoble & Paul Asman  
 Ginger & Mark Leonard  
 Judy & Michael Leopold  
 Anthony Lesenskyj

Carole & Simon Levin  
 Ilene Levine  
 Justine & Steven Levine  
 Paula & Roger Levy  
 Elizabeth Levy Paluck  
 Laura Lichstein & Steven Isaacson  
 Daniel Lieuwen and Daniel Lieuwen Charitable of Fidelity Charitable  
 Lauren Lissaris  
 Judith & Samuel Livingston  
 Daniel Loughner  
 Karen Lovaglio  
 Tammy & Aaron Love  
 Ashley Lyu & John Kim  
 Jane & Robert MacLennan  
 Inger Magnusson  
 Banu Mahalingam  
 Jane Malloy  
 Chris Mancill  
 Sylvie & Lester Mayer  
 Mark Mayer  
 Natalie & David Mazer  
 Sharon McCrae  
 Jame McCray  
 Craig McCullough  
 Martha & Frank McDougald  
 Jock McFarlane  
 Christine McGann & Edwin Lawler  
 Barbara & Thomas McGeachen  
 Carolyn McGrath  
 Judith & Kevin McNally  
 Maureen & Graeme McWhirter  
 Sharon & James Measner  
 Marion Mezzetti  
 Muhammad Mian  
 Susan Michniewski & Douglas Meckel  
 Jane Miller  
 Jennifer Millner  
 Janet & Robert Mills  
 Linda & Joshua Milstein  
 Lydia Mitchell & Gregory Hekel  
 Debbie & Chris Monigan  
 Janet Narayan  
 Gretchen Oberfranc & Charles Creesy

Suzanne Ochse & Dale Gordon  
 Linda & Jack Oliver  
 Carol & Joseph Olivieri  
 Edward O'Rourke  
 Stephanie & Christopher Oster  
 Brenda Overcash & Thomas West  
 Sarah Parks  
 Pamela Patton & Eric White  
 Michael Paul  
 Linda & Gregory Paulson  
 Cynthia Payne & Stephen Elston  
 Catherine Pena  
 Kerry Perretta  
 Gail Petrillo  
 Lindsay Petropoulos  
 Mary & Robert Pickens  
 Marte & Dean Pierson Jr and the Pierson Giving Fund of Fidelity Charitable  
 Sherry Pitkofsky  
 Dorothy & Charles Plohn Jr  
 Kathrin Poole & Ward Tomlinson  
 David Popenoe  
 Rhona & Allen Porter  
 Abigail & Todd Povell and the Abigail and Todd Povell donor advised fund of T. Rowe Price Charitable  
 Elizabeth Powell  
 Karen & Stewart Prager  
 Frances Preston  
 Ruth & Robert Prigge  
 Darlene & Robert Purcell  
 Felicia & Jerry Rackowski  
 Ronnie Ragen & Andrew Lowenstein  
 Lillian Rankel & Andrew Jackson  
 Claire Ransom & Roger Thorpe  
 Jason Rappaport  
 Dori Ray  
 Shari & Martin Rexroad  
 Megan & James Riddlesperger  
 Danner Riebe  
 Sarah Roberts & Lawrence Koplik  
 Elisabeth Rodgers  
 Carol & Brian Rogaski  
 Barbara Ross  
 Donna & Richard Rossi



Dawn & Mark Rosso 🔴  
 Christina & David Rowntree 🟢  
 Janet Russo & Thomas Marion  
 Pamela Russo  
 Maria & Lucas Ryan  
 Carol & Chris Saracco  
 Corin & Jonathan Schack  
 Helene Schlachter & Michael Senchyna  
 Nancy Schluter 🔵  
 Mrs. W. Marshall Schmidt 🔴  
 Joyce Schneiderman & Richard Reeves 🔵  
 Lesley & Marc Schwarzman 🟢  
 Thomas Scott  
 Patricia Scully 🟢  
 Suzanne Seferian & Vince Janoski 🟢  
 Divya Seshadri  
 Molly Sharlach & Kevin Hoeschele  
 Gillian Shoch Reeder  
 Sheryl Snider  
 Lorraine Sova & Michael Brogan 🟢  
 Frank Spain  
 Mark Spencer

Cheri Stead & Douglas Pricer  
 Susan & Richard Steen 🔴  
 Melanie Stein 🟡  
 Diane & Glenn Steinberg 🟡  
 Julia Steinberg  
 Andrea & Jeff Stuart and The Andrea M. and Jeffrey N. Stuart Family Charitable Gift Fund of Fidelity Charitable  
 Caren Sturges 🔴  
 Lois & Russ Swanson 🔵  
 Alexandria Symos & Stephen Klopfer 🟡  
 Robert Tallon Jr 🟢  
 Nicole Tapay  
 Susan & Christopher Tarr 🔵  
 Randee & Christopher Tengi 🔴  
 Ethel & Donald Terhune 🔵  
 Leeann & Rob Thornton 🟡  
 Diane & Alexander Tomkins 🟡  
 Paulette Toth  
 Veronique & Tristan Touzot  
 Mary & Rodham Tulloss 🔵  
 Shannon & Steven Tuorto

Christina Twyman-Saint Victor & Nate Saint Victor  
 Carole Umscheid 🔵  
 Casey Unterman  
 Pam & Mark Vadas  
 Barbara & John Vadnais  
 Janneke & Frank Van Der Ree 🟢  
 Dana Van Meter & Charles Dolan 🟡  
 Judy Venonsky & Michael Rothwell 🔴  
 Sonja Vloeberghs & Gerrit Dispersyn  
 Alana Gomez-Wagner & Andrew Wagner  
 Mary & Michael Wagner 🔵  
 Margaret Bodine Wallis  
 Patsy & David Wang-Iverson  
 Renee & Udo Varias 🟡  
 Laura & Dennis Waters 🔴  
 Alexa & David Weigand 🟡  
 Felice Weiner 🟢  
 Jessica Wen

Rachel Werder  
 Talitha West & Marcus Romano  
 Virginia Whitaker and the Whitaker Giving Fund of Fidelity Charitable  
 Elizabeth & Robert White 🟢  
 Martha & James Wickenden 🟢  
 Anne Wieland & Todd Gustafson 🔴  
 Mary & Mark Wilde  
 Amanda Irwin Wilkins & Timothy Wilkins  
 Joan & Peter Wood  
 Yoojin Grace & Robert Wuertz  
 Wen-Ling Yang & Albert Leung 🟡  
 Nino Zchomelidse & Erik Thuno  
 Harry Zickler  
 Ulrike Zimmer & Joel Coyne  
 Jodi Zweifler & John Masterson

## Supporters | \$25 to \$99

Anonymous 🔴  
 Anonymous 🟢  
 Michael Abramowitz  
 Sarah Adams & Andrew Unger  
 Terri Adams  
 Dorothy Aicher & Alan Johnson 🔴  
 Martha & Graham Akers 🔵  
 Tomi & Lekan Akinyanmi  
 Maritza Albarran  
 Elena Alexeeva & Pierre Deligne 🔵  
 Charity & Dan Allen  
 Eleanor Allen & Chris Morrey  
 Beth & Chris April 🟢  
 Veronica Armour  
 Laura & Ryan Armstrong  
 Rodica Asay  
 Rita Asch  
 Carol & Angelo Auletta 🟢  
 Sushama Austin-Connor & Rob Connor  
 Meredith & Jose Avalos  
 Stuart Azarchi  
 Deborah Badgett  
 Carleen Baily 🟢  
 Meredith Bak  
 Stephanie Baker Ives  
 Thulasi Prasad & Rama Bakkamanthala  
 Tiffany Baldino & John Quilty  
 Steven Bales  
 Linda & Daniel Balto 🔴  
 Grayson Barber & Peter Meyers 🔵  
 Jennifer Baron & Robert Filocco  
 Jacquelyn Barth 🟡  
 Nancy Beck 🔴  
 Anne Bedarf  
 Colin Beer  
 Christina & Joshua Best  
 Cynthia & Peter Betz  
 Alastair Binnie  
 Anne Birkett & James Baxter  
 Candace & Robert Bishop  
 Alison Black & The Black Family  
 Carolyn Blanckmeister  
 Anne & Martin Bloomenthal 🔵  
 Jessie Boehm & Andy Snyder  
 Robin Bogan  
 Melissa Bohl & Ronald Sverdllove 🔵

Cassie Bolinger  
 Jessi & Joseph Bonacci  
 Andrea Bonette 🔴  
 Sharon Lee Boone  
 Mariella Borschow  
 Jennifer & Edward Bowen 🟡  
 Liv Bowring & Carl Davidson  
 Thomas Boyle  
 Joy Brachman  
 Jennifer Brady  
 Sally & Mark Branon  
 Jessica & Peter Braynor  
 Christine & Robert Briggs  
 Wendy & Tim Brill  
 Hsiu-Chin & Werner Brix 🟢  
 Diane & Donald Brockel  
 Alexandria Brody & Matthew Bondar  
 Christine & Garrett Brown  
 Phyllis Brown  
 Amanda & Shawn Brueggemeier  
 Venkata Brugubanda  
 Karen & Mike Brzoska  
 Dana & Robert Bucci  
 Jocelyn Burchfield  
 Laura Bush  
 Lynn & Luke Butler  
 Sheree & Scott Butterfield  
 Consuelo & David Calabro 🔴  
 Margaret Callahan  
 Teresa Callahan  
 Eva & Dennis Campagnoli 🔴  
 Debbie & Don Campbell  
 Daria & Christopher Cappucci 🟢  
 Christine Caputo  
 Suzanne Carbonaro  
 Gabrielle Carbone & Brendan Anderston  
 Eilleen & Ryan Cardone  
 Monica Carlson & Nick Dewind  
 Lisa Caroselli & David Hatton  
 Mary Ellen Carson  
 Joanne Cartabona  
 Mae Carter  
 Marietta Carter & Greg Linde  
 Charles Caruso  
 Karen & Dan Casey  
 Jennifer Cass & Chien Dao Glasgow

Ilianell Castellano & Manuel Angel Loureiro 🔴  
 Ling-yin Chang & Emmanuel Motheau  
 Winnie Chang  
 Angela Chapman 🟡  
 Karen Chapman  
 Margie Charney  
 Yan Chen  
 Cindy Chhedhi & Richard Gomez 🟡  
 Jennie Chiko & Arthur Jones  
 Diana Christensen  
 Jennifer Christiano  
 Megan & Alex Christie  
 Kelly & Paul Christopher  
 Kerry & Jeffrey Claburn  
 Susan & John Clarke 🟢  
 Kathleen Coffey 🟡  
 David Cohen  
 Susan Colby & Robert Witaneck 🔵  
 Brent Coleman  
 Joanna Coleman & Michael Bradshaw  
 Patricia Coleman & Alfred Fittipaldi 🟡  
 Erin Collins-Cecil  
 Marlene & Charles Combs Jr 🟡  
 Molly Cooke  
 Gail & Damian Cooksey  
 Therese & Paul Cooper 🔵  
 Patricia Corbett  
 Dawn Costantini  
 Giuseppe Coviello  
 Nayda Coy-Sabosik  
 Nadia Crisan  
 Elizabeth Crispino  
 Anita Crofts  
 Sarah Crofts  
 Sandra & David Czerniakowski  
 Adelaide & Paul Da Silva Cicero  
 Michele & Andrew Dagenais  
 Sara & Michelle Daly-Padron  
 Erika & Rich D'Andrea  
 Danielle D'Angelo & Chad Goerner  
 Justine Daugherty  
 Elizabeth Davis & Robert Vogt  
 Susan & Jeremy Dayner 🟡  
 Lauren Deal & Miguel Bacho  
 Carole Lynn Declemente Losavio & Buddy Losavio

Annette & Alan DeFalco  
 Kate & Steven DeLuca  
 Lisa DeMarsico & Brian Cole  
 Donna Dickinson  
 Geoffrey DiMeglio  
 Melissa DiMeglio & Richard Clingerman  
 Lynda Dodd  
 Gale Downey 🔴  
 Michele & Bruce Downie 🔴  
 Katherine & Robert Doyle  
 David Drake  
 Ashley & Terrence Driscoll  
 Ellie & Gary Driscoll 🔵  
 Kory & Joe Dudash  
 Christine Dunbar  
 Kaitlin & Callum Dupre  
 Sue & Bob Dupre  
 Marilyn Durkee & Erik VanMarcke  
 Adria & Simon Dwyer  
 Christina & Christopher Dymek  
 Cheryl & Alan Dzubak  
 Annette Earling  
 Lawrence Edwards  
 Susan Eggers  
 Adrienne Elmer & Patrick Hasan  
 Nancy Engel & Robert Nunn 🟡  
 Peter Erdman (deceased) 🔵  
 Emily & Jeffrey Everett  
 Josephine Faass & Will Irving  
 Michelle Falcey & Alex Ewing  
 Philip Falcone  
 Annegret Falkner & Zachary Lehrhoff  
 Tiffany Farano  
 Shaness & Peter Farrell  
 Kristina Feja & Lorant Leopold 🟡  
 Sheila & William Fernekes  
 Huong & Matthew Ferris  
 Eileen Feurey  
 Heidi Fichtenbaum & Antonio Reinerio 🟡  
 Roberta Fineman  
 Virginia Finley 🟡  
 Bridgid Finn & David Bario 🟡  
 Richard Fisher  
 Aubrey Fitzpatrick & Corey Finnerty-Ludwig  
 Kelly & Bill Flannery



Roberta Fleischman 🔥  
Danielle Flores & Bart Devolder  
Ann & Michael Folli 🟡  
Wendy Ford  
Steve Foster  
Stacey Fox  
Lori Frank & Doug Wisniewski 🔵  
Kristyn & Brian Friedlich  
Rebecca & Clark Fullman  
Catherine Fulmer-Hogan & Anthony Hogan  
Mary Furey & Paul Gerard 🟢  
Karen Galley  
James Gambino Jr  
Melissa Gardner & Chuck Wood  
Mahlet & Nick Garedew-Ballard  
Kathy & Peter Garner  
Jessica Garon  
Amy Garrison  
Gabrielle Gault  
Genevieve & Justin Gaynor  
Mary Joan Gaynor & Laurence Hunt 🔵  
Kim & Robert Geis 🟡  
Delpha & Milton Georges  
Doris & Hank Gerwers  
Patricia Gibney 🔵  
Jennifer Gifford  
Bonne Giglio  
Ibrahim Cem Girit  
Elizabeth Glynn & Trevor Scott  
Kefi & Larry Godfrey  
Lori Goebel & Byron Veale 🔥  
Stefan Goff 🔵  
Debra & Daniel Goldberg  
Becca Goldman & Carolyn Galayda  
Deanna & Morton Goldstein 🔵  
Stephanie Golski  
Dami Gomer  
Christina Gonzalve  
Anne & Ken Gordon  
Marina Gorgoschidse & Pablo Gurman  
Diane Gottardi & Curtis Scott  
Patricia Graham  
Peter Green  
William Green 🟢  
Judith & Thomas Gregory  
Maureen & Gary Greiner  
Betsy & Tom Grimes 🟢  
Jennifer Grissom & Marjorie Paloma  
Lilian Grosz 🔵  
Patricia Gruber

Gwen Guglielmi & Thomas Vogt 🔥  
Janet Gwiazda & Jon Lyman 🟡  
Carol & Carl Haag 🔵  
Barbara Hallows 🔵  
Michelle Hamilton & Jeff Hoagland 🔥  
Dawn & Thomas Hammell  
KJ Hansel & Tony Goscowicz  
Kara Hanson & Jonathan Miller  
Samantha Harley & Brian Knisely  
Meg Harmsen  
Abigail Harris & Edward Shea 🔥  
Robin & Max Harris 🟡  
Ann Harwood 🟢  
Beth Hatem & Greson Torchio  
Sharon & Chris Haver  
Barbara Hayes & David Packer 🔥  
Chunbai He & Weicheng Wu  
Pat Heaney & Dan McCullough  
Katherine Heavers  
Regine Heberlein & Julio Concha  
Cynthia Hedin  
Marsha Heiman  
Kathy Hempstead & Andrew Haughwout 🔥  
Pearl Ann Hendrix & Charles Jerdonek  
Melissa & Dan Hettena  
Andrea Higginbottom 🔥  
Catherine Hilton & Sam Page  
Amy Hoffman & Michael Trokenheim  
Quinn & Keith Hofmann  
Suzanne Holdcraft & Alexander Sherrard 🔵  
Sheri & James Hook  
Betty Horn 🔵  
Laura & Bob Hornby  
Stephanie Horowitz & Benjamin Horowitz Paterek  
Emily Hostetter  
Jamie Howes Howard & Scott Howes  
Mary & Matthew Howe  
Marta & Paul Hryniak  
Yilin Huang & Lieping Wang  
Lucia & Charles Huebner 🟡  
Adele & Alan Humphrey  
Katsiaryna Hushcha  
Beth Hutton 🟢  
Jeanne & Thomas Imbrigiotta  
Chris Ives  
Erin & Takashi Iwai  
Madalena & Guilherme Iwamoto  
Rebecca Jacobsen  
Laurel Jamieson

Susan Jarvis-Hagstrom & Joseph Hagstrom 🟢  
Yi Jia & Mofei Qu  
Ben Johnson  
Cory Johnson & Russell Barefoot  
Donna Johnson  
Eric Johnson 🟡  
Rebecca & Andrew Jonas  
Dale Jones  
Anna Jonkman & Hayo Andreae  
Marilyn & James Jordan Jr 🟡  
Anna & Justin Junge  
Wendy Kaczerski & Roger Shatzkin 🟡  
Lisa & Kris Kaehn  
Joan Kahn 🔵  
Deb Karvelas & Jenny Godnick  
Lauren Karyczak  
Nancy & Barry Kay 🟢  
Lindsey Kayman & Gabriel Kotliar  
Mark Kearney 🟡  
Kate & Andrew Kehoe  
Dorothy Kelley 🟡  
Carol Kelly 🔵  
Charlotte & Michael Kelly  
Shannon Kelly-Thompson & Jack Thompson  
Doriann Kerber  
Aimee & Gregory Kessler  
Susan & Stephen Kim  
Pat & John Kime  
Carolynn & Robert Kirch  
Jessica & Samuel Klein  
Melissa & Jeff Klepacki  
Jamie & Jeffrey Knol  
Geraldyn Koblis  
Mamatha Kodidela  
Mary & Scott Kolb 🔥  
Maya Kollman & Barbara Bingham 🟡  
Lillian Koo & Matthew Thorburn  
Heather & Albrecht Koppenhofer  
Joshua & Mary Ann Koslov 🔥  
Lois Kotkoskie  
Clare & John Kowalak  
Nicole Kramer & Douglas Weiss  
Lois Kraus  
Barbara Kreider  
Victoria, Casimir & Christine Kulikowski  
Prachi Kulkarni & Prateek Duple  
Marian Labos & Christoph Vetter  
Victoria & Alexey Laktionov  
Benedetta Lambert  
Leslie Lanphear

Todd Lanphear  
Laurie Larson 🔵  
Nina & Stephen Laubach  
Sharon Lauer  
Yuki Moore Laurenti & Jeff Laurenti 🔥  
Alexandra Lauri  
Christine & Easten Law  
Mary Leck 🔵  
Joan Lee & Reid Collins  
Selene Lee & Sangbaek Park  
Susan Leigh & John Toggweiler 🔵  
Jane & David Leonard 🔥  
Kevin Leslie  
Eleanor & David Letcher  
Meagan & Brian Levinson  
Mikaela & Jaquan Levons  
Brian Levy  
Felicia Lewis  
Edward Leydon  
Michelle Li & Michael De Silva  
Wan Lim  
Xiaohong Lin  
Carl Lindskoog  
Eleni & Neil Litt  
Cate & James Litvack  
Martha & Benjamin Liu  
Karin & Andrew Lloyd  
Alison & Jeffrey Lockman  
Andrea & Michael Loftin  
Jill & Jay Long  
Mary Lott 🟡  
Marni & Matthew Lun  
Brendon Lyons  
Cheryl Maccaroni  
Jean Mahoney 🔥  
Holly Majcher & Bradley Dickerson  
Kayleigh Maklary  
Risa Mandell  
Anna Martinez & Stephen Stacy  
Anastasia Marty 🔥  
Lia Mastropolo & Kenny Shepard  
Emily Mattek  
The Mattes Family 🔥  
Catherine Mauger-Williams 🟡  
Roberta & George Maurer  
Mary & Steve Maybury 🔥  
Roberta Mayer  
Betsy & James McClure  
Elise & Paul McCoy

Jessica McDermott  
Alicja & Thomas McGoldrick  
Julia McGuire  
Marina & Patrick McKeon 🔥  
Erin & Mike McMaster  
Jennifer & Gavin McNay 🟡  
Lynn & Ted McNulty 🟢  
Stacey Meadows & Christoph Spath  
Jennifer & Victor Medina  
Deborah & Lewis Meixler 🔵  
Mary Beth Melton  
Michele & Mark Menditto  
Luci & Jay Meranchik  
Carol & Galen Meyer 🟢  
Shelby Michaels  
Maria & Barry Middleberg  
Sally Mikkelsen 🔥  
Karen & Ken Miller  
Marie Miller 🟢  
Mary & Robert Miller 🔥  
Nancy Miller 🟡  
Susan Dennis Miller  
Maria & Thomas Miller  
Tom Miller  
Carol & Richard Miner 🟢  
Sally Mirick  
Johanna Mora  
Elisabeth & Perry Morgan 🔵  
Carron & Geoff Morris 🟡  
Kaitlin Morse Keon & Alec Keon  
Ruth Mortensen 🔵  
Nina Moseley  
Maria Elayna Mosley  
Subarna Mozumder & Biplob Debnath  
Christina & Steve Mruskovic  
Jill Mudge  
Casey Murphy-Gerry & Kurt Gerry  
Katherine Murtaugh  
Emily Muschinske & Aaron Brown 🟡  
Alison Myers  
Melvin Myers  
Joan Mysiak  
Leslie Nagler 🟢  
Chelsey & Jordan Nettuno  
Kimberly & Ian Nevins  
Aiko Nishioka  
Phoebe Nobles & Michael Dickman  
Amber Novobilsky

Michele Ochsner  
Alyson & Michael O'Donnell  
Karen Ohland  
Maria & Nicolas O'Leary  
Nancy & Tom O'Leary 🟢  
Priscilla Oliveira  
Kate & Tom O'Neill 🔥  
Tasha O'Neill  
Simone Oppenheimer & Steven Cooper  
Frank Ordiway  
Vishnu Oruganti & Anuj Desai  
Angela Orvis & Adam Keller  
Virginia O'Shea & Robert Kirby 🟡  
Martha Otis and The Martha G. Otis Charitable Fund of Schwab Charitable 🔵  
Daniel Pace 🔵  
Joanne Pannone  
Jessica & Jeffrey Paolini  
Aigli Papantonopoulou  
Chi Park & Tim McNulty  
Jiyeon Park & Dan Schobel  
Megan & Albert Park  
Micah Parker & Jeffrey Friedland  
Ali Parrington & Keith Corrigan  
Hannah Parzen  
Diana Pasculli & John Provenzale  
Arny Patel  
Barbara Pavlicek 🔵  
Gregory Peck  
Leslie Pell  
Maureen Pellegrino  
Betty Peng  
Maryann Perkins  
Linda & Michael Perlin 🟡  
Fran Perlman  
Keally & Daniel Perrone  
Mina & John Perry  
Kathryn & Mark Peters  
Molly Peterson  
Heather & Tyler Piche  
Amanda Picone  
Kimberly Pilkievicz & Dan Fernandez  
Meredith Pindar  
Alexandra Pinz  
Sarah & Donald Pitches  
Pam Podger & John Cramer

Joan Ponezza & Henry Balikov  
Hanhui Por & Florian Lorenz  
Jessica & Ryan Porter  
Piti Prapassiriphan  
Brinda Prasad  
Rose & Kevin Prey  
Erin & Ian Price  
Lorraine Prince  
Yvonne & Mia Princk  
Bethanne & John Prugh  
Joleen Pugliese & Eden Fucci  
Nancy Putnam 🔵  
Elizabeth Randolph  
Polly Ranson 🔵  
Mary Reece  
Kara & Edward Reed  
Cathy Rehwinkel  
Inga Reich & Peter Kelly  
Jay Reinfeld  
Debbi & Scott Rekant  
Sheila & Kurt Reynertson  
Bob Rhoad  
Rachel & Matthew Rhodes  
Margaret Riccardi 🟡  
Linda & Craig Richmond 🔥  
Mary Richmond-Michael & Douglas Michael  
Claire & Alexander Ridings  
Jens Riedel 🔥  
Monika & Gregory Riedlinger  
Janet Riemer  
Mary Rigby  
Catherine Riihimaki  
Marilyn Riley & Robert Seidenstein 🔥  
Sarah Rivett  
Ann Robideaux & Jesse Neuman  
Latoya Robinson  
Meredith & Rainer Rogers 🟢  
Gloria Rohmann & Eric Grover Rohmann  
Patricia & Juan Rojas  
Kristin & Rick Rokes  
Marisa Rosen  
Susan Rosen  
Nancy & Daniel Rubenstein 🔵  
Cara & Brian Ruddy  
Ellen & Allan Ryan 🔵  
Shabnam Salih  
Barbara Sandstrom 🟡  
Lucia Sanin & Diego Zapata 🟡

Aishwarya Sankaranarayanan & Saminathan Ramachandran  
 Marie Santa  
 Isabel Santacruz  
 Navaneetha Santhana & Dwarakanath Geerpuram  
 Nivedithaa Santhanam & Vidhyut Sampath  
 Kristin & Jorge Santos  
 Richard Santosuso  
 Faith & Gene Sarafin  
 Henry Saveth  
 Katherine & Scott Schaub  
 Mark Scheibner  
 Chrystal & John Schivell  
 Margaret Schleissner & Emily Pelz  
 Eda & Jim Schmalz  
 Susan Schmoyer & Reinier Broker  
 Annemarie Schorpion & Justin Brozzetti  
 Linda & Eric Schrading  
 Brittany & Kyle Schueckler  
 Katharine & Richard Schumacher  
 Kathleen & Bruce Schwartz  
 Martin Schwartz  
 Joan Schwarzwalder  
 Sara Scully  
 Andrew Seeder  
 Corissa & Prescott Seraydarian  
 Delmy Serrano  
 Felicia Sexsmith & Jonathan Levine  
 Judie & Bill Sferro  
 Sejal Shah  
 Sandra & Daniel Shapiro  
 Kathryn Shaw & Woosok Yu  
 Rose Shaw  
 Kirsten Shearer & Matej Bajla  
 Kim Sheleheda  
 Kristen & Eugene Shlossberg  
 Amy & Nicholas Shriver

Morgan Silk  
 Jillian Sills  
 Neri Yolanda Silva & Arturo Silva  
 Selina Simon & Aaron Michaluk  
 Lopamudra & Sandip Sinharay  
 Ann & Zoltan Sisko  
 Nithya Sivaram & Vijay Sankaran  
 Jennifer & Edward Skillman  
 Leonid Slutsker  
 Audrey & Michael Smerkanich  
 Samantha & Richard Smith  
 Therese & Robert Smith  
 Erica & Paul Snyder  
 Sudi Solomon & Martin Rosen  
 Margaret & Thomas Southerland Jr  
 George Spais  
 Dianne & Barry Speronello  
 Aurelle Sprout & James Hake  
 Sharon Squicciarino  
 Marge & Scott Stanford  
 Karen & Geoffrey Stankus  
 Linda & Kevin Stecchini  
 Rebecca Steele & Johnston Grier  
 Timothy Stefanco  
 Elly Stein  
 Emilia & Walter Stepek  
 Janet Stern & George Theodoridis  
 Samantha Stern-Leaphart & Jordan Aubry  
 Lauri & Ben Stevens  
 Lauren Stirling & Josh Melasky  
 Margaret & Daren Stotler  
 Linda Strange  
 Marianne & Robert Strickhart  
 Phyllis & Michael Suber  
 Scott Sullivan  
 Nancy Sung  
 Mike Surman  
 Hannah Suthers

Nancy & Juris Svarcbergs  
 Kyle Swaney  
 Cecily Swanson & Kip Berman  
 Nhi & Chris Swanson  
 Pamela & Stanley Switlik  
 Pedro Syrdahl  
 Dorina & John Szczepanski  
 Marijke & Floriaan Tasche  
 Olga Tashchuk  
 Alexandra Tatnall  
 Kristen & Brandon Taverni  
 Carol Tellefsen  
 Julie Tennant  
 Chantel Tester & Keith Martin  
 Lisa & Eric Thayer  
 Chris Thern & Matt Conner  
 Deborah & Gordon Thomas  
 Jennifer & Peter Thomas  
 Claire Todd & Eric Allender  
 Mary & Dan Tomaschko  
 Max Tomlinson  
 Carolyn & Louis Torre  
 Robert Trautz  
 Nelson Trenner  
 Olga Troyanskaya & Ethan Zlotchew  
 Mimi & Charles Turi  
 Kristina & Jeremy Turner  
 Palmer Uhl  
 Rebecca & Robert Uhrick  
 Prashantha Upadhya  
 Janet & Alan Upperco  
 Theresa & Michael Vaccaro  
 Monica Vagnozzi & Peter Vogel  
 Jamie & Greg Valenski  
 Evelyn Van Naerssen  
 Karen Vander Laan  
 Rekha Velani  
 Jessica & Vincent Verderame  
 Jodi & Ken Viaud  
 Edward Vienckowski

Sandra & Robert Vornlocker  
 Arti Vyas & James Cozine  
 Corey & Tim Waldron  
 Leeann Walker & Charles Shupe  
 Meghan & John Walsh  
 Bay Waltman  
 Tyler Wardenski  
 Shana Weber & Kevin Scully  
 Sarah Weidel  
 Andrea Welker & Michael Horst  
 Holly Welles & Rob Thomas  
 Carol Welsch & Allen Brown  
 Courtney White  
 Ed Wickham  
 Kay Widmer  
 Candice Wiggum  
 Emily Wild  
 Rachel Wiley  
 Margot & Sean Wilkinson  
 Kyle & Carl Wille  
 Hannah Williams & William Ramos  
 Bhavna & Khurt Williams  
 Alma & Richard Williams  
 Catherine & Steve Wilson  
 Krysta Woll & Lawrence Johnson  
 Chrystene Wyluda  
 Rose Yacovone  
 Mario Yepes-Baraya  
 Jerry Yochelson  
 Marian Young  
 Valerie & Matthew Young  
 Elizabeth Zacharias & Ian Bourq  
 David Zaiser  
 Callie & Dan Zheng  
 Yijing Zheng & Dajia Zhao  
 Joan Zinader  
 Elizabeth Zingg  
 Liz Zuckerman  
 Robin & Harold Zullow

## Foundation & Corporate Donors

### \$25,000+

Bloomberg L.P.  
 Bristol Myers Squibb Company  
 Kentfields Foundation  
 National Wildlife Federation  
 NJ Department of Environmental Protection  
 The William Penn Foundation  
 Pisces Foundation  
 Robert Wood Johnson Foundation  
 The George H. & Estelle M. Sands Foundation  
 Veolia North America

### \$10,000-\$24,999

Church & Dwight Employee Giving Fund  
 The Gordon and Llura Gund Foundation  
 The Curtis McGraw Foundation  
 National Audubon Society, Inc.  
 National Fish and Wildlife Foundation  
 Princeton University  
 PSEG

### \$5,000-\$9,999

Advi Health, LLC  
 The Rita Allen Foundation  
 Colgate-Palmolive Research Center  
 Educational Testing Service  
 Johnson & Johnson  
*Matching Gift Program*  
 Mesa Associates, Inc.  
 NRG Energy, Inc.

### \$2,500-\$4,999

Bristol Myers Squibb Foundation – *Matching Gifts*  
 The Duke Farms Foundation  
 Glenmede Trust of New Jersey  
 David Mathey Foundation  
 PTC Therapeutics  
 Truist Wealth

### \$1,000-\$2,499

Bank of America – *Matching Gifts*  
 Beigene USA, Inc.  
 BlackRock – *Matching Gifts*  
 Culture Works Greater Philadelphia  
 Delaware Township Citizens Against the Pipeline, Inc.  
 Doris Duke Charitable Foundation – *Matching Gifts*  
 Hewlett Packard Enterprise Foundation – *Matching Gifts*  
 The Lawrenceville School  
 New Jersey American Water  
 Pinneo Construction  
 PNC Private Bank  
 Princeton Hydro  
 RBC Foundation – USA

### \$500-\$999

Abbott Laboratories – *Matching Gifts*  
 Community Foundation of New Jersey  
 Davey Resource Group, Inc.  
 Google, Inc. – *Matching Gifts*  
 Green Building Center – NJ  
 Mercer County Community College  
 Meridian Furniture  
 Mills + Schnoering Architects  
 Millstone Township  
 Natural Resources Conservation Service  
 NJM Insurance Group  
 Old Hights Brewing Company  
 Penn Medicine Princeton Health  
 Rippled Waters Engineering, LLC  
 Robert Wood Johnson Foundation – *Matching Gifts*  
 State Farm Insurance  
 Stellitano Heating & Air Conditioning  
 Steward Green, LLC  
 Sustainable Jersey Group  
 Trout Unlimited

### \$250-\$499

Cranbury Township  
 Garden Club of Princeton  
 Hiltons Princeton  
 Land Trust Alliance  
 Meadow Lakes, a Springpoint Community  
 New Jersey Septic Management Group  
 Stony Brook Garden Club of Princeton  
 UnitedHealth Group – *Matching Gifts*

### Under \$250

AmazonSmile  
 Billtrust – *Matching Gifts*  
 Borough of Hightstown  
 Daiichi Sankyo, Inc. – *Matching Gifts*  
 Fitch Group – *Matching Gifts*  
 Garden Club of Trenton  
 Harding Loevner LP – *Matching Gifts*  
 Hopewell Township  
 Hopewell Valley Vineyards  
 Mallinckrodt Pharmaceuticals – *Matching Gifts*

The Merck Foundation – *Matching Gifts*  
 Montclair State University  
 Munich RE America Services, Inc. – *Matching Gifts*  
 N.J. Sustainable Business Council  
 News Corp – *Matching Gifts*  
 Next Level Performance  
 Northeast Organic Farming Association  
 Pennington Presbyterian Church  
 Rakuten Americas – *Matching Gifts*  
 Rocky Brook Garden Club  
 Rutgers University Libraries – SPCOL  
 Sanofi – *Matching Gifts*  
 Simons Foundation – *Matching Gifts*  
 Verizon Foundation – *Matching Gifts*  
 Washington Crossing Audubon Society  
 Wells Fargo Community Giving – *Matching Gifts*



## In Honor of

Barbara Andrew  
Katherine Himes

**Bharagavi**  
Archana Bhorkar

**Bo**  
Aubrey Fitzpatrick & Corey  
Finnerty-Ludwig

**The Citrone Family**  
The Black Family

**Sophie Glover**  
Tirza Wahrman Mitlak  
& Warren Mitlak  
Margaret Bodine Wallis

Stanley Jacobs  
Mary Ingraham  
Sharon Piety-Nowell

**Todd Lanphear**  
Leslie Lanphear & Desmond

**Olivia Spildooren &  
Hank Huang**  
Donna Dickinson

**Jim Waltman**  
Amy Hansen & Mark Canright

## Muriel Gardiner Buttinger Legacy Society

Mary Jane Augustine  
Evelyne A. Axelrod\*

Connie and Bill Bauder  
Barbara Baumecker

Jeremy Beer  
Beth Behrend

Barbara and Edward Bromley  
Howard Russel Butler Jr.\*

Jane L. Buttars  
Helen Cannon

Elliot Cohen  
Brenda and Swep Davis

Barbara R. Delafield\*  
Anna Drago\*

James Gambino Jr.  
Meg and Tom Gorrie

Stephanie and Bob Harris  
Carolyn Ryan Healey

Frank O. Henschel\*  
Kit Hildick-Smith\*

James Scott Hill\*

Betsy Hoover

Audrey C. Johnson\*

Betty Wold Johnson\*

Robert C. Johnston\*

Rev. David McAlpin, Jr.\*

Sue and Tony Parisi

Richard Peery\*

Susan and Cornell Rudov

Jamie Kyte Sapoch

Raymond S. Schullery\*

Alice Bishop Shannon\*

Doreen Spitzer\*

Robert Tomaselli  
and Michael Dawson

Susan Travers\*

Jim Waltman

Sally Wells

Anne Pacsu Wieland

Van Williams

Helen M. Woodruff\*

L. Brewster Young\*

\*deceased



The Watershed Institute staff is made up of experts in conservation, advocacy, science, and education who are passionate about protecting the environment and preparing the next generation to continue the mission.

## 2023 Financial Statement

Thanks to the unwavering support of our members and volunteers, we continue to protect clean water and the environment through our work in conservation, advocacy, science, and education.



- Individuals (35%)
- Foundations (21%)
- Program Revenue (13%)
- Government (2%)
- Special Events (8%)
- Investment Funds (16%)
- Lease Revenue (2%)
- Corporations (2%)



- Administration (10%)
- Conservation (30%)
- Development (10%)
- Education (20%)
- Watershed Policy (15%)
- Watershed Science (15%)

ASSETS	2023	2022
Cash & Cash Equivalents	\$2,692,491	\$3,381,680
Accounts Receivable	\$240,308	\$197,459
Investments	\$16,797,860	\$15,209,939
<b>TOTAL CURRENT ASSETS</b>	<b>\$19,730,659</b>	<b>\$18,789,078</b>
Land, Buildings and Easements	\$13,500,203	\$12,932,455
Other Assets	\$20,535	\$15,971
<b>TOTAL ASSETS</b>	<b>\$33,251,397</b>	<b>\$31,737,504</b>

LIABILITIES	2023	2022
Current Liabilities & Accounts Payable	\$219,092	\$130,478
Long Term Liabilities	\$2,260,614	\$2,303,722
<b>TOTAL LIABILITIES</b>	<b>\$2,479,706</b>	<b>\$2,434,200</b>

NET ASSETS	2023	2022
Unrestricted Net Assets	\$2,262,947	\$1,995,283
Board Restricted Net Assets	\$2,470,570	\$3,224,844
Permanently Restricted Assets	\$24,813,899	\$26,893,670
Net Income	\$1,224,275	-\$2,810,493
<b>TOTAL NET ASSETS</b>	<b>\$30,771,691</b>	<b>\$29,303,304</b>

<b>TOTAL LIABILITIES &amp; NET ASSETS</b>	<b>\$33,251,397</b>	<b>\$31,737,504</b>
---	---------------------	---------------------

\*unaudited information



31 Titus Mill Road  
Pennington, NJ 08534

NON-PROFIT ORG  
US POSTAGE  
**PAID**  
Permit No. 352  
Bellmawr, NJ 08031



### Board of Trustees

Barbara Griffin Cole, *Chair*  
Shefali Shah, *Vice Chair*  
Enrique Curchister, PhD, *Secretary*  
Ari Soroken, *Treasurer*  
Jim Waltman, *Executive Director*

Danielle Bentsen, MD  
Robert C. Berness  
Marc Brahaney  
Ger Brophy, PhD  
Jonathan Bryant  
Anne Catena, EdD  
Rob Connor, PhD  
Silvia Debenedetti, PhD  
Paula Figueroa-Vega  
Ayanna McKay  
Alicia Merse  
Damon Missouri  
Carolyn Sanderson  
Kurt Schulte  
Patricia Shanley, PhD  
Jennifer Staikos  
Peter Tovar  
Susannah Wise, MD  
Margaret R. Gorrie, *Trustee Emeritus*

### Staff

Jim Waltman, *Executive Director*  
Sophie Glovier, *Chief of Operations*  
Kevin Walsh, *Chief of Finance & Admin*  
Kory Dudash, *Conservation Director*  
Jeff Hoagland, *Education Director*  
Jenny-Ann Kershner, *Development Director*  
Mike Pisauro, Esq., *Policy Director*  
Steve Tuorto, PhD, *Science Director*

Vicky Allen	Jessica McDermott
Matt Bondar	Lynn McNulty
Susan Bristol	Lucia Middleton
Davis Bush	Eve Niedergang
Rich Cavallaro	Alison Novobilsky
Sarah Crofts	Priscilla Oliveira
Kim DeScetto	Alan Polk
Dom Giglio	Andrew Rogers
Donna Gregory	Eda Schmalz
Pat Heaney	Jian Smith
Anna Hill	Pete Smith
Nicholas Ho	Olivia Spildooren
Allison Jackson	Erin Stretz
Ayanna Johnson	Gilda Suncar
Michael Kim	Matt Thompson
Julia Kizar	Allison Willick
Kendra McKoy	

### Advisory Board

Kevin Kuchinski, <i>Co-Chair</i>	Mary Leck, PhD
Laura Hanson, <i>Co-Chair</i>	Richard Levandowski, MD
Sandra Allen	Wendy Mager
Mary Jane Augustine, Esq.	Frank McDougald
William Ayers, PhD	Martha McDougald
Mary Baum	Mark S. Nurse
Nancy Beck	Nelson Obus
Kathleen Biggins	Thomas O'Neill
Lori Citrone	Kim Otis
Elliot Cohen	Candace Preston
Patty Cronheim	Ingrid Reed
Dan Dart	Jamie Kyte Sapoch
Wendy Pierce Evans	Aaron Schomburg
Emily Cevallos Firmenich	Lorraine Sciarra
Deborah Sands Gartenberg	Dick Scribner
Alix Gerry	Catherine Sidamon-Eristoff
Peter Gibson	Margaret Sieck
Margaret R. Gorrie	Scott Sillars
Ed Gwazda	Penny Thomas
Katherine Hackett	Ted Thomas
Bob Harris	Greg Vafis
Thomas B. Harvey	Daniel J. Van Abs, PhD
Carolyn Ryan Healey	Jack Wallace
The Hon. Rush D. Holt, Jr.	Philip Wey, MD
Betsy Hoover	Van Zandt Williams
Mike Hornsby	Bernadette Woods Placky

**Donate and Support  
The Watershed Institute Today!**

Your Donation Will Help Us Keep Water Clean, Safe & Healthy!



Learn more at  
[thewatershed.org](http://thewatershed.org)